

Water resistant, flexible protective coating

PCI Lastogum[®]

under ceramic tiles in showers and bathrooms

With official test certificates.

Fields of application

- Liquid waterproofing membrane to be applied by roller, brush or trowel.
- For indoor use.
- For walls and floors.
- For use class A0 in accordance with ZDB leaflet "Verbundabdichtungen" (bonded waterproofing) not covered in the official test certificate.
- For use class A Wall in accordance with the test principles to issue an official test certificate.
- For water exposure class W0-I, W1-I, W2-I (wall) in accordance with DIN 18534.
- For use up to use class W4 to Austrian standard B 3407.
- For wet areas subject to non-pressing water such as bathrooms, showers in residential buildings, hotels, old people's homes and hospitals.
- On moisture-sensitive, absorbent substrates, e.g. plaster, gypsum block, gypsum fiber board, plasterboard, particle board, anhydrite screed in moist and wet areas subject to common domestic use.
- On mineral absorbent substrates, e.g. concrete, screed, render, aerated concrete, cementitious wall levelers such as PCI Pericret and/or PCI Nanocret FC and self-levelers, e.g. PCI Periplan Fein and PCI Periplan.

Features and benefits

- Water impermeable, protects moisture-sensitive substrates.
- Flexible, compensates tensions, substrate deformations, temperature variations and vibrations.
- Crack bridging, high reliability even if cracks in the substrate form at a later stage.
- Ready to use, easy to apply by roller, brush or trowel.
- Two colors, for easier visual control of the layer thickness.
- Resistant to lime water, ensures adhesion between protective coating and mortar if the adhesive bed is constantly exposed to moisture.



Undiluted PCI Lastogum applied to the substrate by roller, brush or trowel.



| | |
|--|--|
| CE 1073,0767 | |
| PCI Augsburg GmbH Piccardstraße 11 D-86159 Augsburg | |
| 15 DE0146/01 | |
| ETA-12/0578 | |
| PCI Lastogum (DE0146/01) Liquid applied watertight covering kit for wet room floors and walls ETAG 022 Part 1:2007 | |
| Reaction to fire | Class E No dangerous substances |
| Vapour permeability (Declared Z value) | With primer PCI Wadian 2 > 1 000 000 s/m Without primer PCI Wadian 2 > 30 000 s/m |
| Water tightness | Watertight |
| Crack bridging ability | Class 2 Crack width 0,75 mm |
| Bond strength | Class 2 > 0,5 MPa |
| Joint bridging ability | Class 2 watertight |
| Water tightness around penetrations | Class 2 watertight |
| Resistance to temperature | Class 2 Bond strength > 0,5 MPa Crack width > 0,75 mm |
| Resistance to water | Class 2 > 0,5 MPa |
| Resistance to alkalinity | Class 2 > 0,5 MPa |
| Reparability | Repairable |
| Thickness | Minimum thickness 0,5 mm |
| Applicability | Applicable |

Features and benefits

- Solvent free, no harmful risk to the environment, can be used without any harmful health risks.
- Meets the test principles to issue an official test certificate for bonded waterproofing in combination with the adhesives PCI Carraflex,

PCI Carrament, PCI Flexmörtel S1, PCI Flexmörtel S1 Rapid, PCI Flexmörtel S1 Flott, PCI FT Extra, PCI FT Flex, PCI Nanolight, PCI Nanolight White.
All test certificates are available under www.pci-augsburg.de.

Technical data

Material

| | |
|--------------------|--|
| Material base | solvent-free synthetic resin dispersion |
| Components | single component |
| Density | approx. 1.5 g/cm ³ |
| Control dye | white and/or gray |
| Packaging size | |
| PCI Lastogum white | 8 kg plastic pail stock no. 2439/3 15 kg plastic pail stock no. 2440/9 25 kg plastic pail stock no. 2450/8 |
| PCI Lastogum gray | 4 kg plastic pail stock no. 2877/3 8 kg plastic pail stock no. 2441/6 15 kg plastic pail stock no. 2442/3 25 kg plastic pail stock no. 2449/2 |
| Shelf life | min. 12 months; store dry and frost free, no permanent storage over +30°C |

Application

| | | | | |
|---|---|--|--|--|
| Minimum consumption at required dry layer thickness of 0.5 mm | approx. 1.1 to 1.2 kg/m ² * (∧= approx. 0.8 l/m ²) | | | |
| Wet film thickness (min. 2 layers) | approx. 0.7 mm | | | |
| Coverage | 4 kg pail covers approx. 3.5 m ² | 8 kg pail covers approx. 7 m ² | 15 kg pail covers approx. 13 m ² | 25 kg pail covers approx. 21.5 m ² |
| Processing temperature | +5°C to +25°C (substrate temperature) | | | |
| Evaporation time after 1st layer** | approx. 1 hour | | | |
| Evaporation time after 2nd layer** ready for subsequent tiling | approx. 1 to 2 hours | | | |

* Consumption might increase with rough substrates. An additional 25% of the minimum dry layer thickness should therefore be considered in accordance with the standard regulation.

** At +23°C and 50 % relative humidity. Higher temperatures reduce, lower temperatures increase the times given.

Preparation of substrate

■ The substrate must be structurally sound, dry (cement screed 4%, anhydrite flowable screed 0.5%, measured with CM meter), clean and free from oil, grease and other residues which should be removed by sand-blasting, brushing or shot-

blasting (Blastrac) if necessary. The practically smooth surface must be free from honeycombs, gaping cracks or ridges. Prime gypsum-based substrates and plasterboards beforehand with undiluted PCI Gisogrund. Prime absorbent

mineral substrates with PCI Gisogrund, diluted 1 : 1 with water. Prime dry, tightened particle boards with PCI Wadian. Allow primer to cure before applying PCI Lastogum.

Application procedure

1 Apply undiluted PCI Lastogum by roller (lambskin roller), brush (wall brush, float), or trowel to the substrate covering the entire surface. A minimum of two layers is required.

2 Place PCI Pecitape 10 x 10 and/or PCI Pecitape 42.5 x 42.5 over pipe culverts and floor drains. For corner joints and floor/wall junctions: use PCI Pecitape 120 and press it into the

first layer of PCI Lastogum. Projecting edges of the fabric are covered by the second layer.

3 Allow the first layer to dry before applying any further layer. We recommend for better coverage control to use PCI Lastogum grey for the first layer and PCI Lastogum white for any further layer(s). The applied layer is too thin if the previous color is visible; this

should be avoided.

4 Allow PCI Lastogum to cure. Tiles and flagstones can be laid on vertical and horizontal areas using PCI Nanolight, PCI Flexmörtel S1 or PCI Flexmörtel S1 Rapid. Calibrated natural stone should be laid using the adhesives for natural stone PCI Carraflex.



1. Absorbent mineral substrates or gypsum-based substrates and plasterboards primed with PCI Gisogrund.



2. PCI Pecitape 10 x 10 is placed over the pipe connection protruding from the wall and covered with PCI Lastogum (gray).

Technical Data Sheet

PCI Lastogum®



3. PCI Pecitape120 fixed with PCI Lastogum (gray) in corner joints and floor/wall junctions.



4. Apply undiluted PCI Lastogum (gray) to the substrate as a first protective layer covering the entire surface.

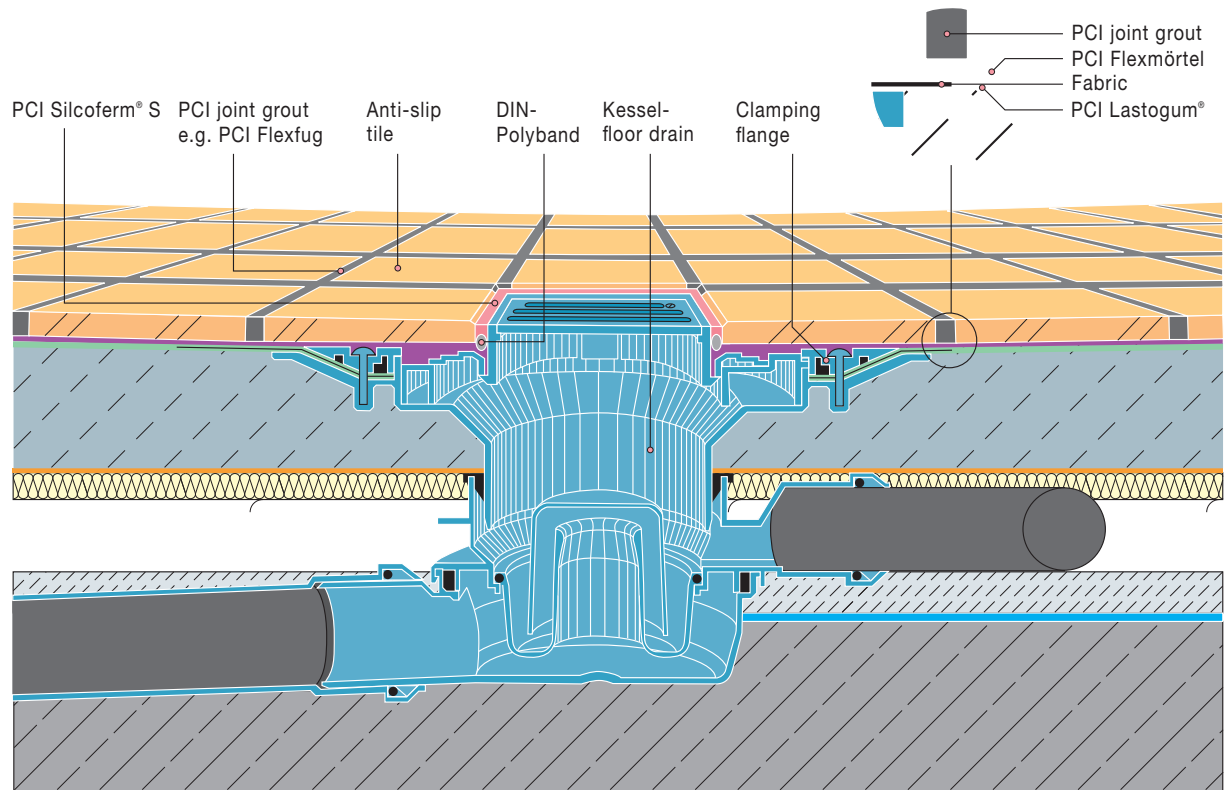


5. Apply second protective layer with PCI Lastogum (white) after an evaporation time of approx. 1 hour. The first layer of PCI Lastogum (gray) should not be visible, otherwise another layer is required.



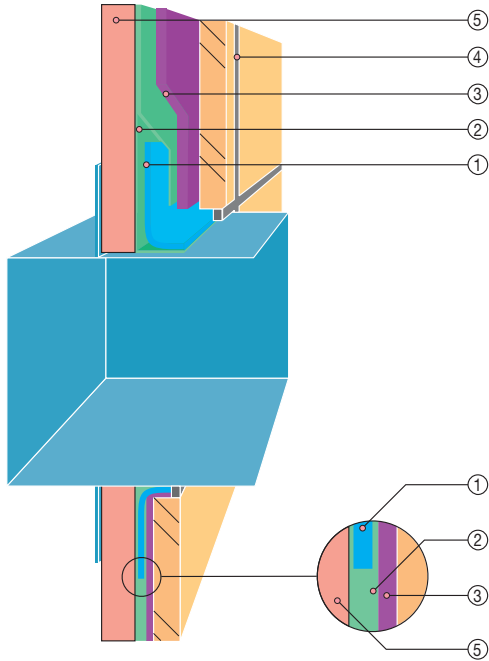
6. Allow the waterproofing layer PCI Lastogum to cure before laying tiles and flagstones.

Detail: Waterproofing of a floor drain



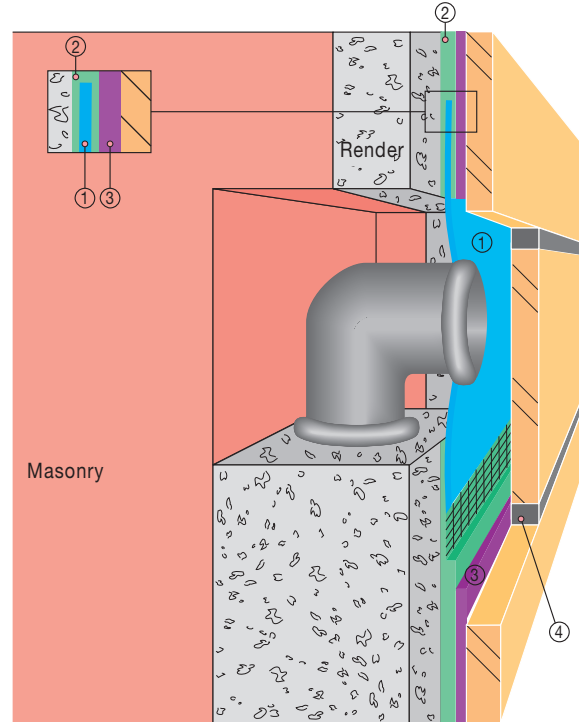
Detail: Installation of a waterproof wall-mounted housing for fittings (e.g. Hansa DAL)

- ① PCI Pecitape® 42.5 x 42.5
- ② PCI Lastogum®
- ③ PCI Flexmörtel
- ④ PCI joint grout, e. g. PCI Nanofug Premium
- ⑤ plasterboard



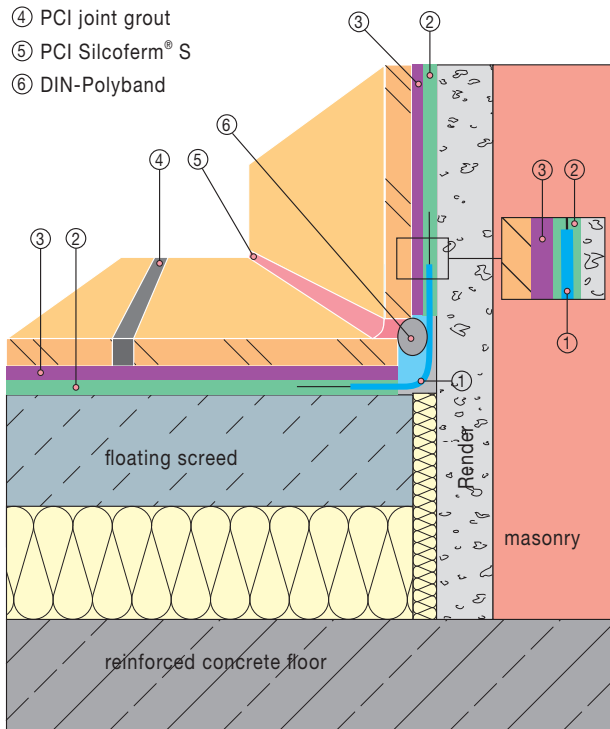
Detail: Pipe culvert / wall

- ① PCI Pecitape® 10 x 10
- ② Waterproofing layer: PCI Lastogum®
- ③ Tile adhesives: PCI Flexmörtel, PCI Nanolight®, and/or PCI Carraflex®, on waterproofing layer PCI Lastogum®
- ④ PCI joint grout



Detail: Floor-wall connection

- ① PCI Pecitape® 120
- ② Waterproofing layer: PCI Lastogum®
- ③ Tile adhesive: PCI Flexmörtel, PCI Nanolight®, and/or PCI Carraflex®, on waterproofing layer PCI Lastogum®
- ④ PCI joint grout
- ⑤ PCI Silcoferm® S
- ⑥ DIN-Polyband



Packaging size of fabric tapes

■ PCI Pecitape 120

waterproofing tape for water-resistant corner and connection joints

50 m roll

stock no. 1013/6

10 m roll

stock no. 1014/3

■ PCI Pecitape 90° A

prefabricated external corner
stock no. 1018/1

■ PCI Pecitape 90° I

prefabricated internal corner
stock no. 1017/4

■ PCI Pecitape 42.5 x 42.5

waterproofing collar
stock no. 1016/7

■ PCI Pecitape 10 x 10

waterproofing collar
stock no. 1015/0

Please note

- We do not recommend PCI Lastogum for outdoor use and waterproofing measures in swimming pools. Use the crack-bridging waterproofing slurry PCI Seccoral for these purposes.
- Do not apply PCI Lastogum at substrate temperatures below +5°C and above +25°C.
- The protective layer can be exposed to foot traffic after 2 hours at the earliest if two layers are applied.
- We recommend to use PCI Lastogum gray for the first layer and PCI Lastogum white for the second one for better coverage control. The first layer must not be visible.
- In-wall fittings which can be integrated in the water-resistant protective layer of PCI Lastogum by means of PCI Pecitape 42.5 x 42.5 are available from e.g. Hansa or DAL. Thin-bed floor drains are available e.g. from Kessel.
- The waterproofing collar PCI Pecitape 10 x 10 must enclose the pipe (not the plug which will be removed later), otherwise the pipe must be extended beyond the area to be waterproofed by inserting a spacer.
- The connection joint at the edge of a floating screed must be free from mortar and waterproofing slurry to avoid acoustical bridges. We recommend to leave an area free from PCI Lastogum, i.e. at least 10 mm in horizontal and vertical direction at the wall/floor connection (see detailed drawing). Possible contamination on the barrier strip should be thoroughly removed before inserting the waterproofing tape.
- Tools should be washed with water immediately after use. The cured product can only be removed by mechanical scraping.
- Shelf life: min. 12 months; store dry and frost free, no permanent storage over +30 °C.
- The waterproofing layer must also be applied below and behind shower base and bathtub if the surrounding area is sensitive to moisture.

Declaration of Performance

The Declaration of Performance can be downloaded as pdf file under www.pci-augsburg.eu/dop.

Information on the safe use

May cause an allergic skin reaction. Keep out of reach of children. Wear protective gloves and eye/face protection. If the eye irritation does not ease off within a few minutes seek medical advice. If medical advice is needed, have product container or label at hand.

Treated goods in accordance with regulation (EU) No 528/2012:

Contains biocide (in-can preservative):
2-methyl-2H-isothiazol-3-one, 1,2-benzisothiazol-3(2H)-one, mixture of 5-chloro-2-methyl-4-isothiazolin-3-one and 2-methyl-2H-isothiazol-3-one (3:1).
Giscode D1

For further information: see PCI Material Safety Data Sheet.

Disposal of emptied PCI sales packaging

PCI participates in an area-wide waste disposal system for sales packaging completely emptied. DSD – Duales System Deutschland (Dual System Germany, contract number 1357509) is our partner for waste disposal. PCI sales packaging completely emptied can be disposed of via DSD in

accordance with the symbol printed on the packaging. For further information on disposal see the safety and environmental information in the price list and also on the Internet at http://www.pci-augsburg.eu/de/service/disposal_instructions.html.

Services for architects and designers

Consultations at the workplace, supplementary information, testing certificates and sample descriptions can

be requested from professional advisors and at the company headquarters.



PCI Augsburg GmbH

Piccardstr. 11
86159 Augsburg
P.O.B. 10 22 47
86012 Augsburg
Germany
Tel. +49 (821) 59 01-0
Fax +49 (821) 59 01-372
www.pci-augsburg.de



In view of widely varying site conditions and fields of application of our products this technical data sheet is meant to provide general application guidelines only. This information is based on our present knowledge and experience. The customer is not released from the obligation to conduct careful testing of suitability and possible application for the intended use. The customer is obliged to contact the technical help-line for fields of application not expressly stated in the technical data sheet under "Fields of Application". Use of the product beyond the fields of application as stated in the technical data sheet without previous consultation with PCI and possible resulting damages are in the sole responsibility of the customer. All descriptions,

drawings, photographs, data, ratios, weights a.o. stated herein can be changed without advance notice and do not represent the condition of the product as stipulated by contract. It is the sole responsibility of the recipient of our products to observe possible proprietary rights as well as existing laws and provisions. The reference of trade names of other companies is no recommendation and does not exclude the use of products of similar type. Our information only describe the quality of our products and services and are no warranty. Liability is accepted for incomplete or incorrect particulars in our data sheets only in the event of intent or gross negligence, without prejudice to claims under product liability laws. All transactions are subject to our Terms of Sale and Supply.

Technical Data Sheet No. 177 (May 2020), Any subsequent publication supersedes this edition.
German edition May 2020; the latest edition is always available on the Internet under www.pci-augsburg.de